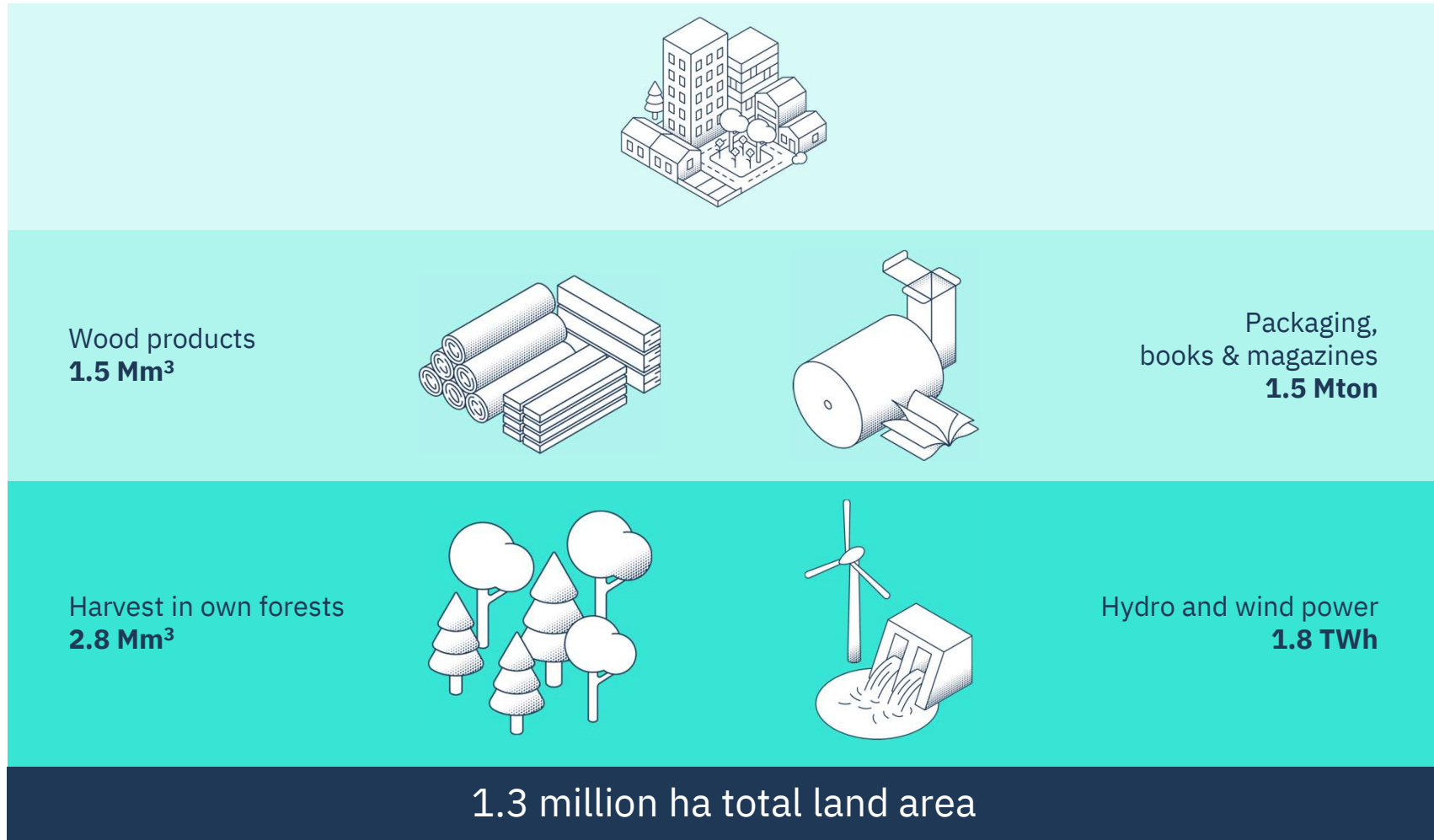
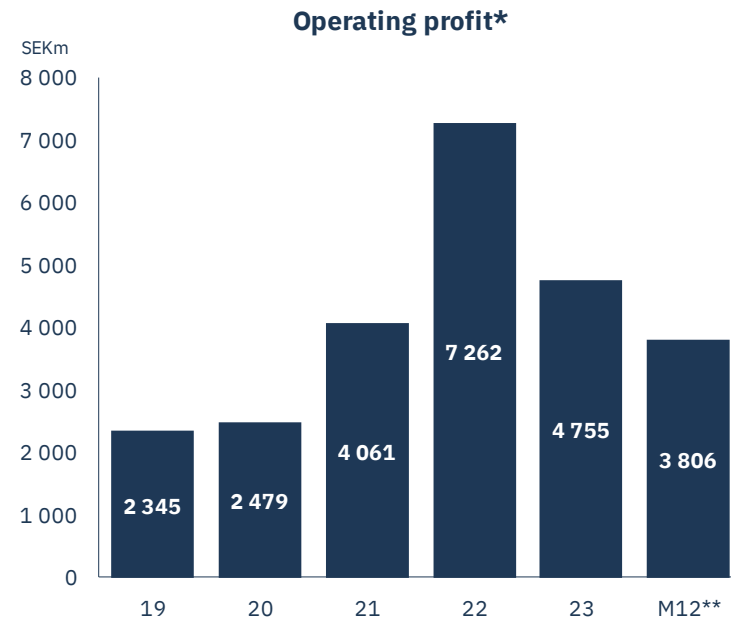
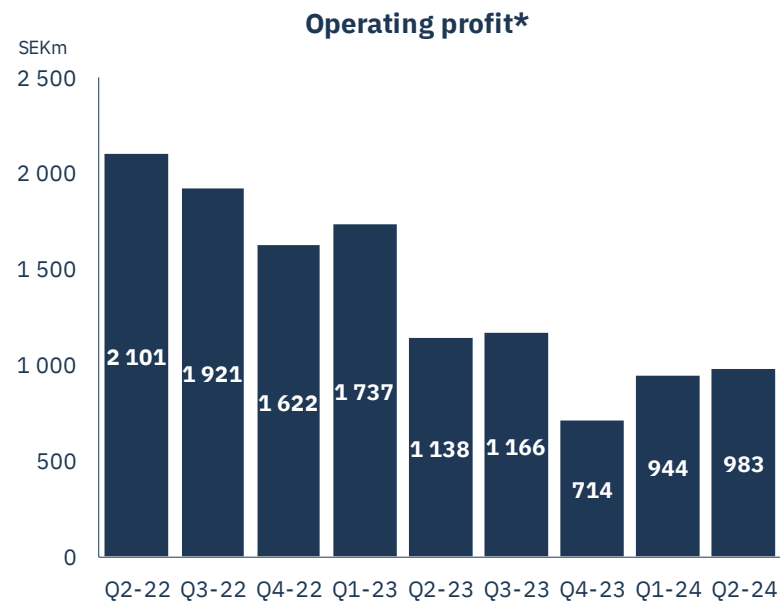


# Growing a sustainable future



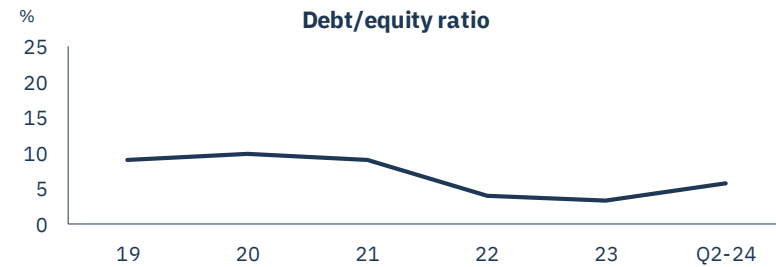
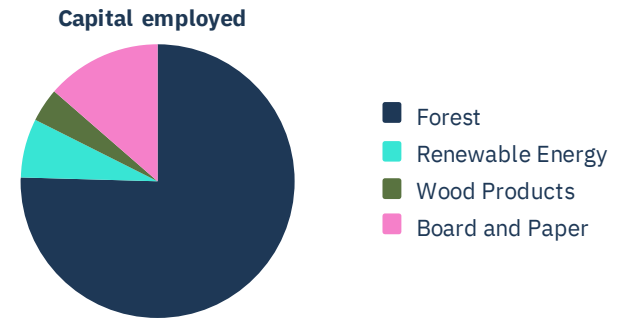
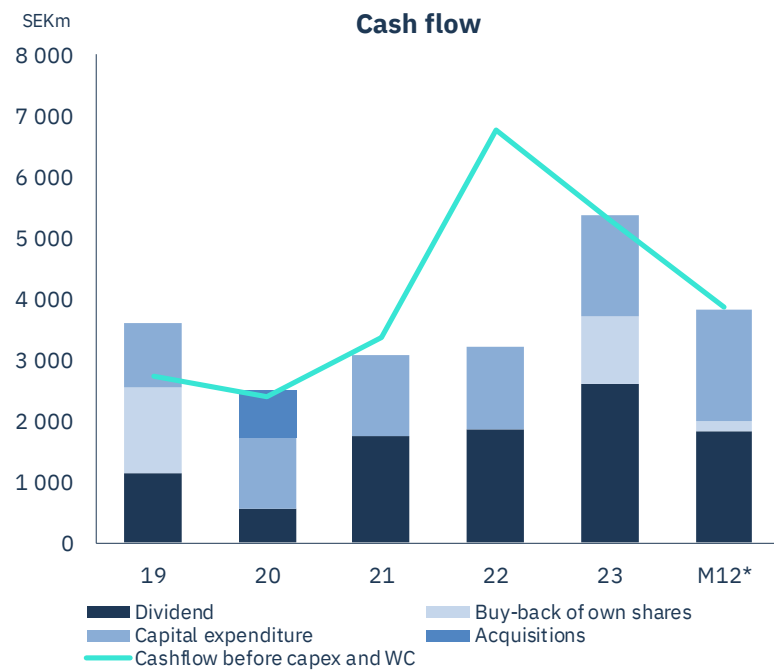


# Solid earnings despite slow cycle

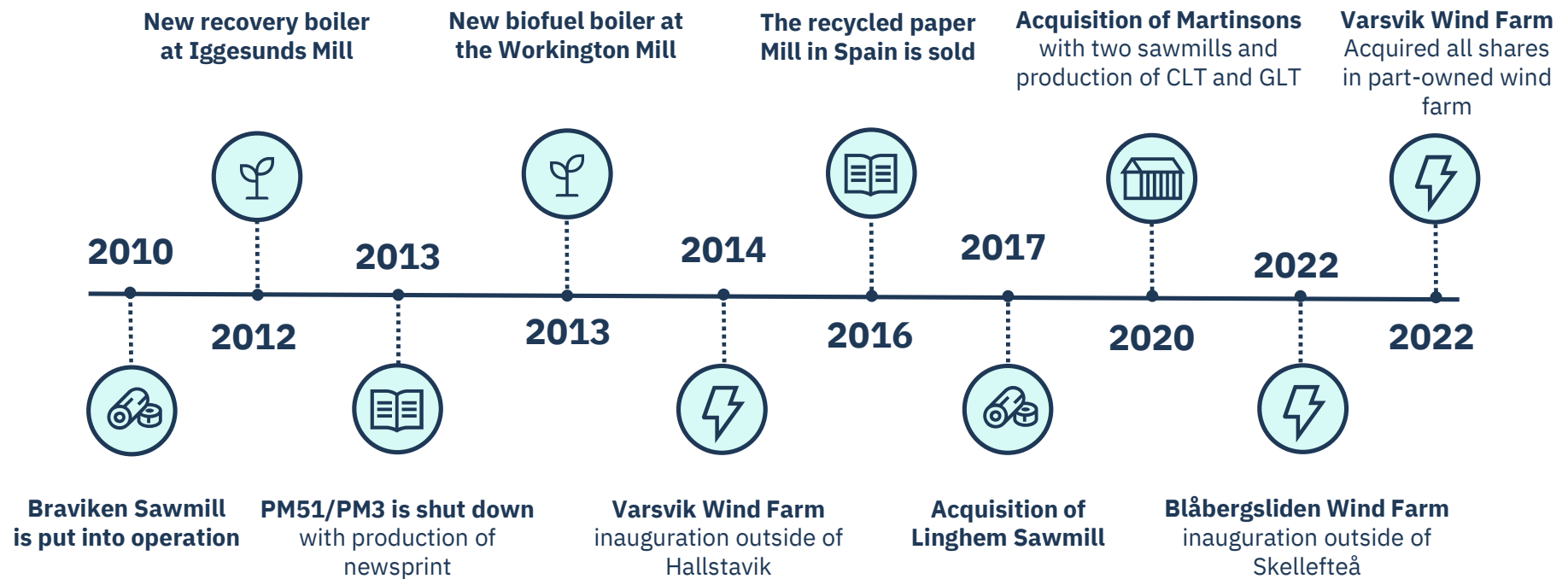


# Net debt at 6% of equity

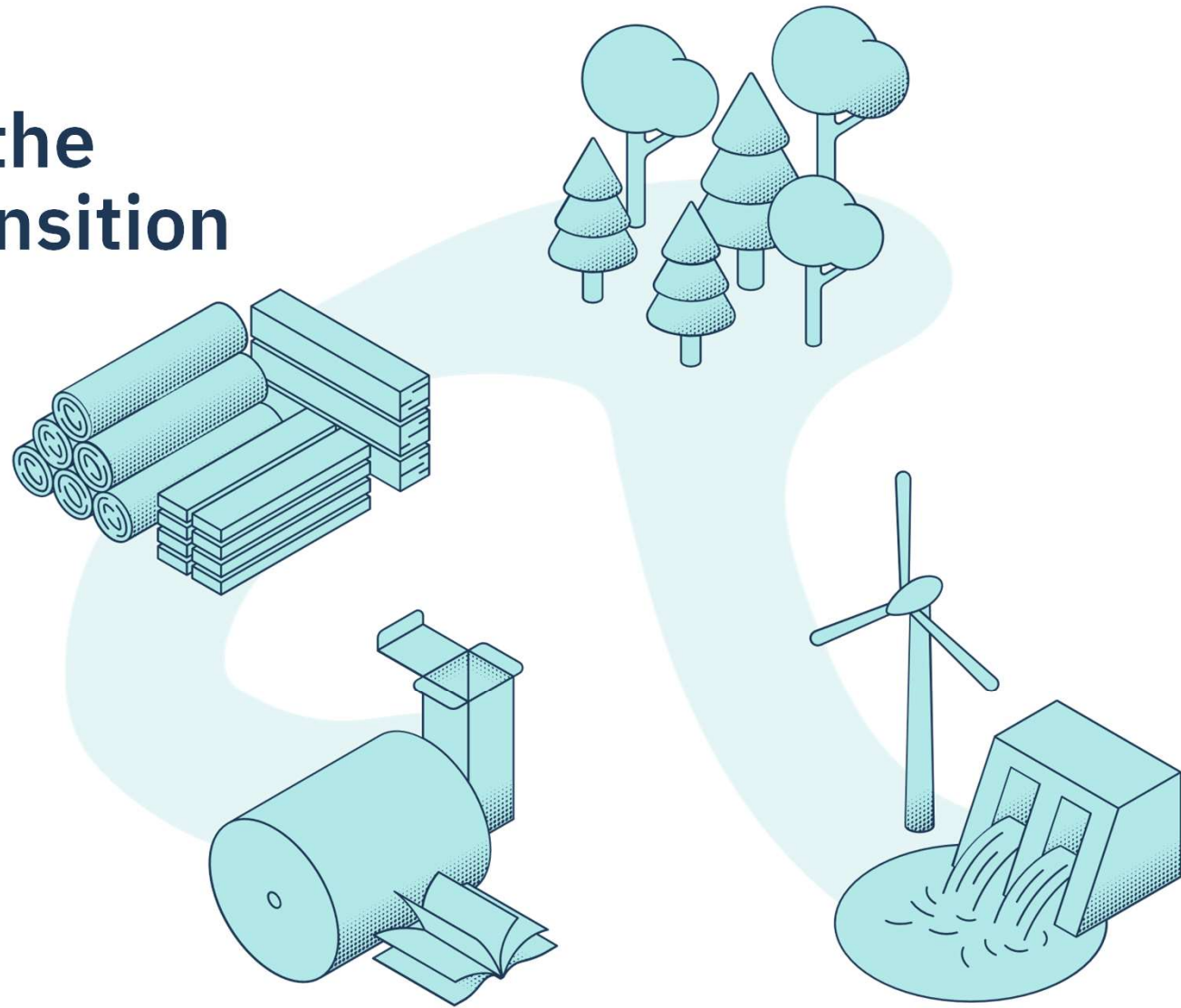
## SEK 1.8 bn dividend distributed in Q2



# Expanding wood products and wind power

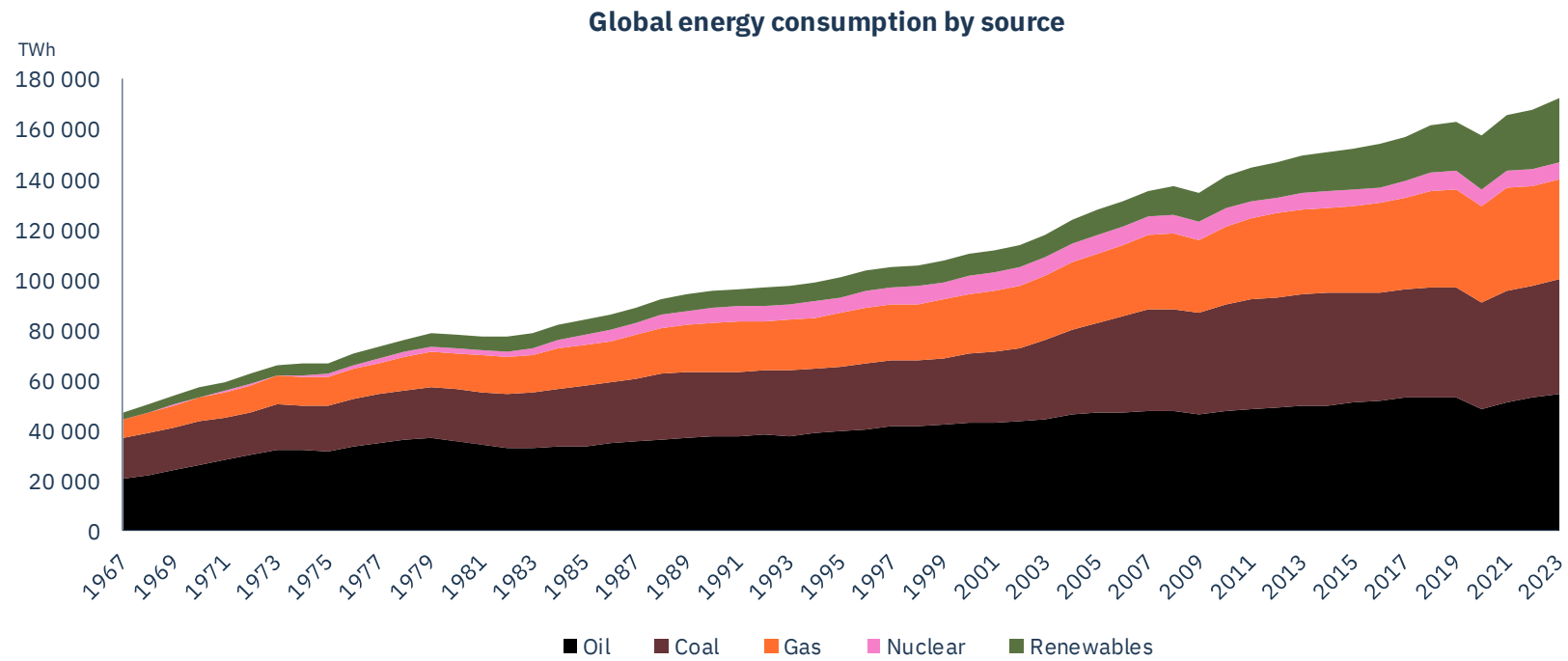


# A bet on the green transition



# The world is fossil fueled

## Fossil energy has quadrupled last 50 years



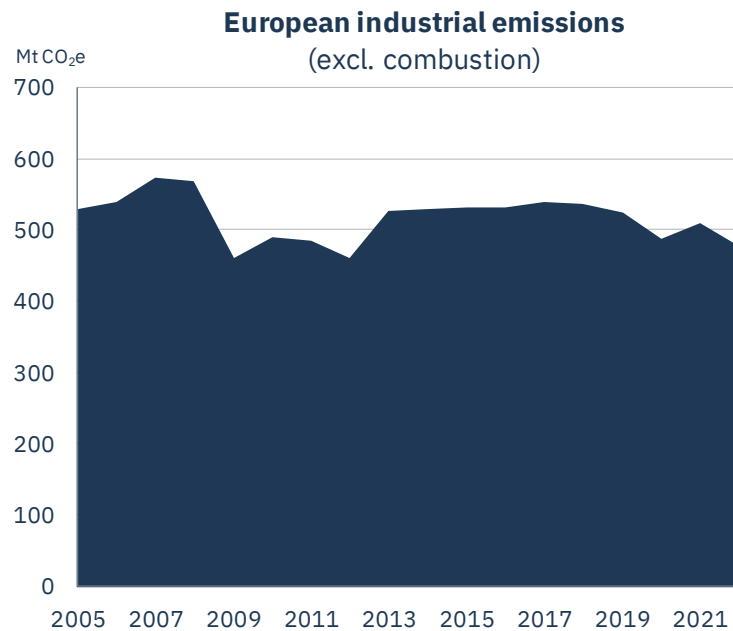
# EU has high ambitions for climate & ecosystems



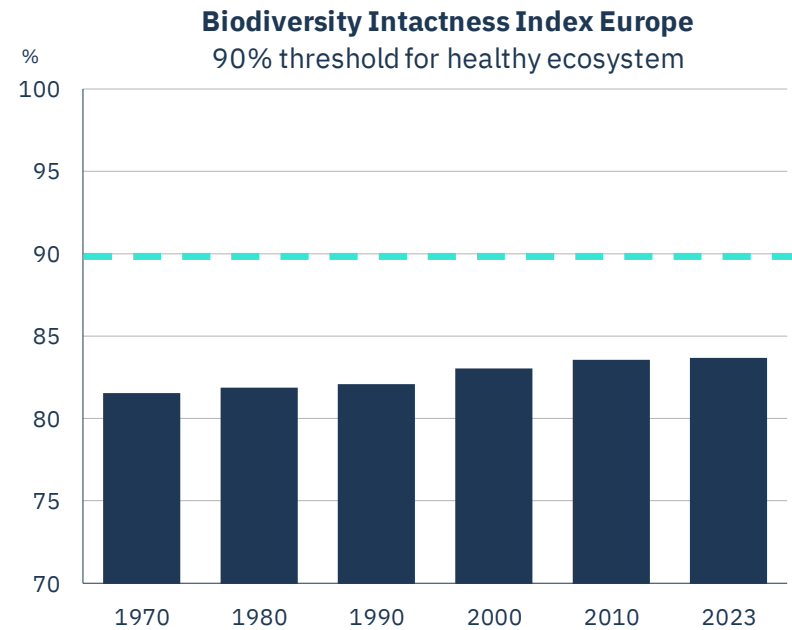


# European industry has not decarbonised

## Biodiversity is under pressure



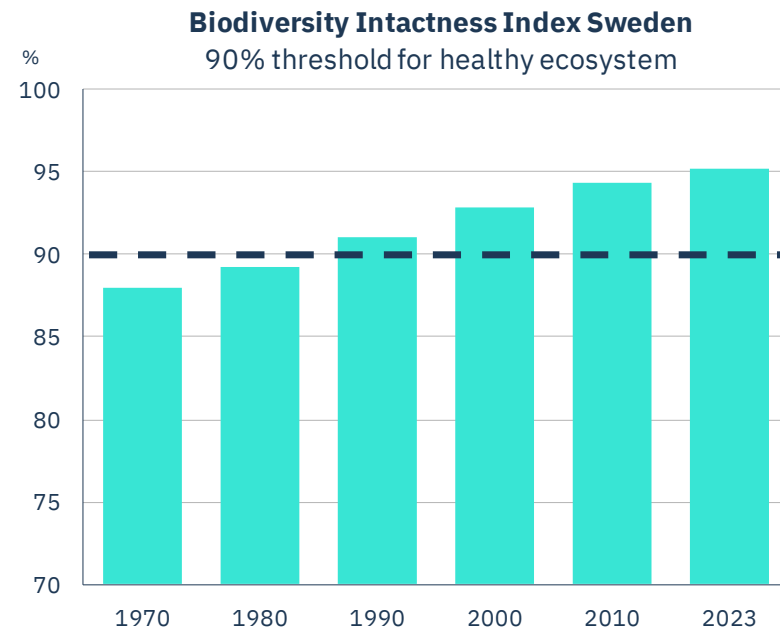
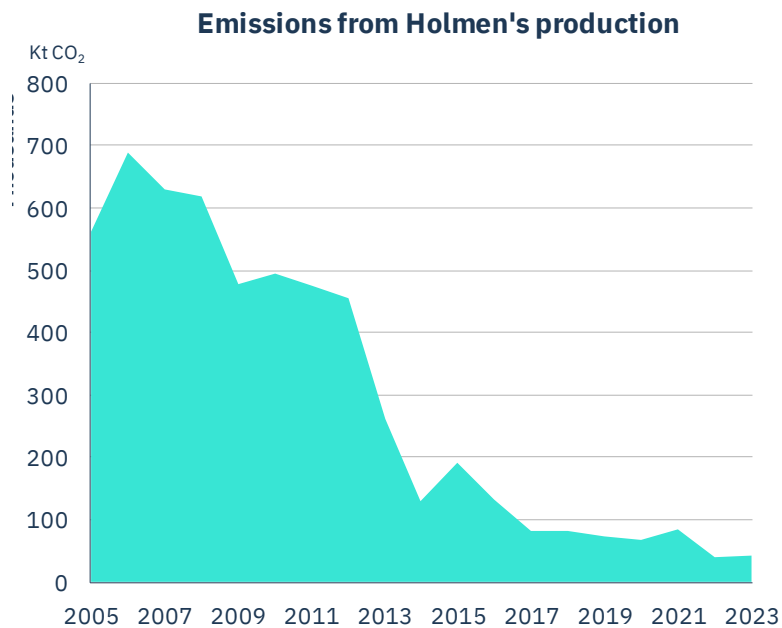
Source: European Environment Agency



Source: [Natural History Museum](#)

# We have lowered our fossil emissions by 90%

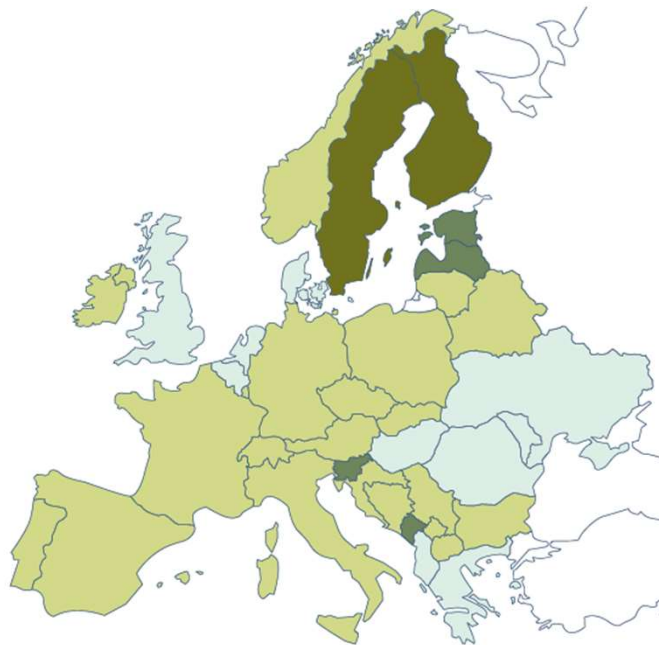
## Swedish ecosystems are in balance



# Access to wood & fossil-free energy

## Forest assets\*

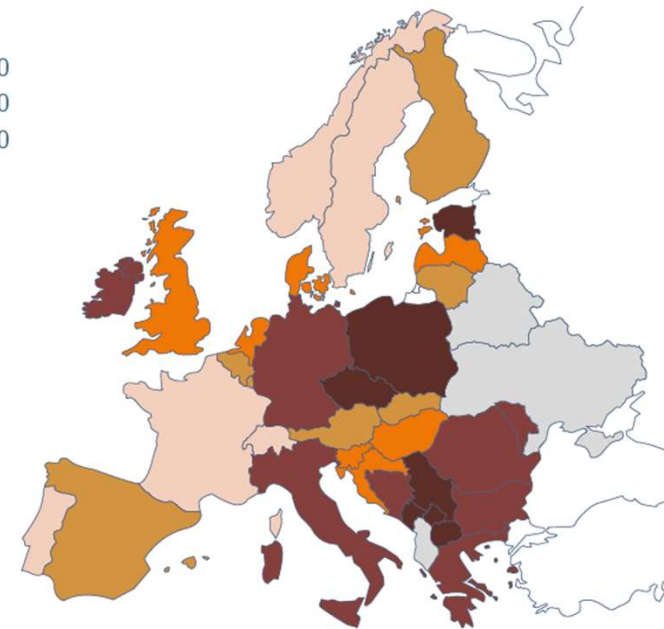
- >65
- 51-65
- 31-50
- 11-30



\*Proportion of forested land, %. Source: FAO Global Forest Resources Assessment 2020

## Carbon intensity from electricity production\*\*

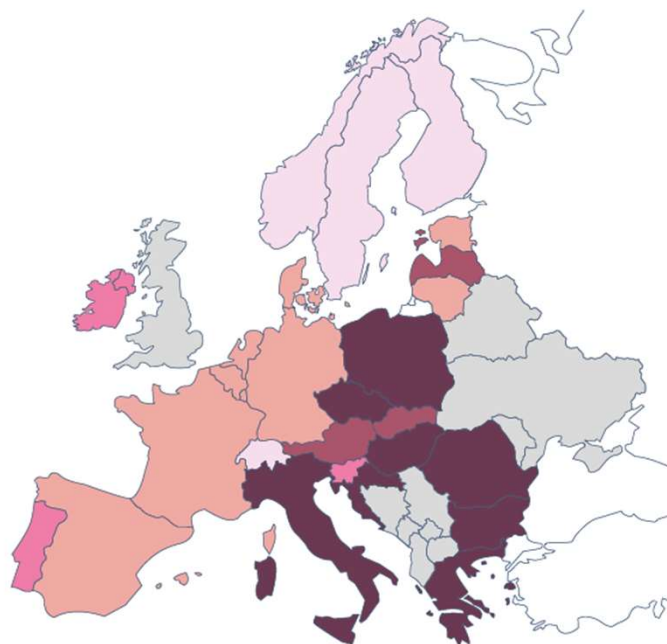
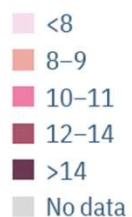
- <100
- 101-200
- 201-300
- 301-500
- >500
- No data



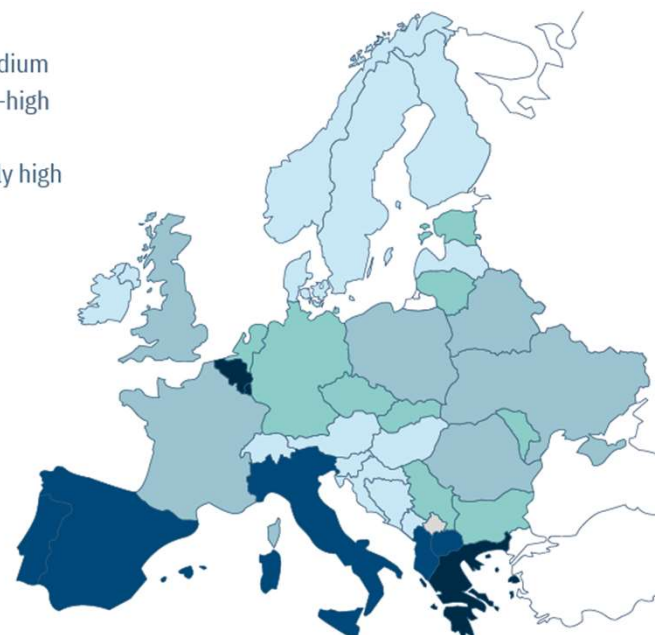
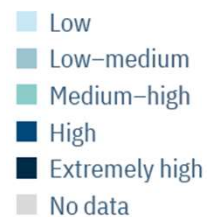
\*\*Carbon intensity from electricity production (gCO2eq/kWh). Source: Electricity Maps, entsoe.eu

# Clean air and plenty of water in the Nordics

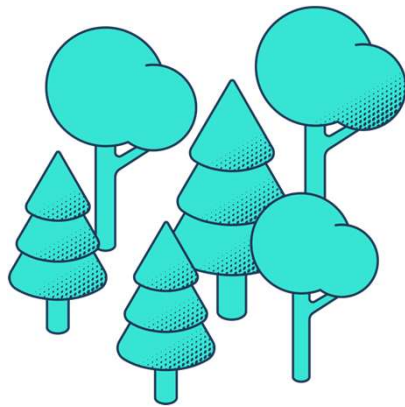
## Air pollution\*



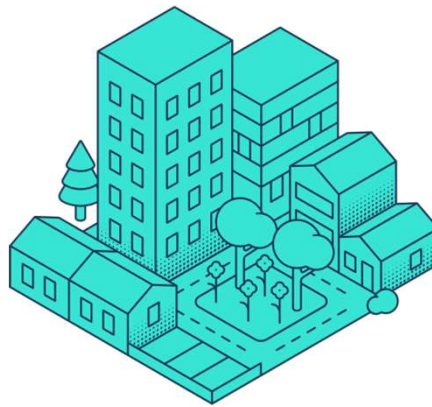
## Water stress\*\*



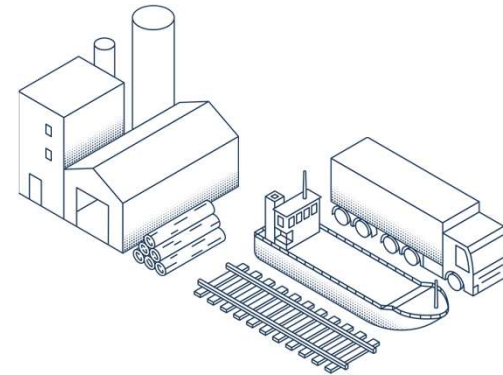
# We're beyond net zero



**1.6** Mt CO<sub>2</sub>  
Net increase in growing forest



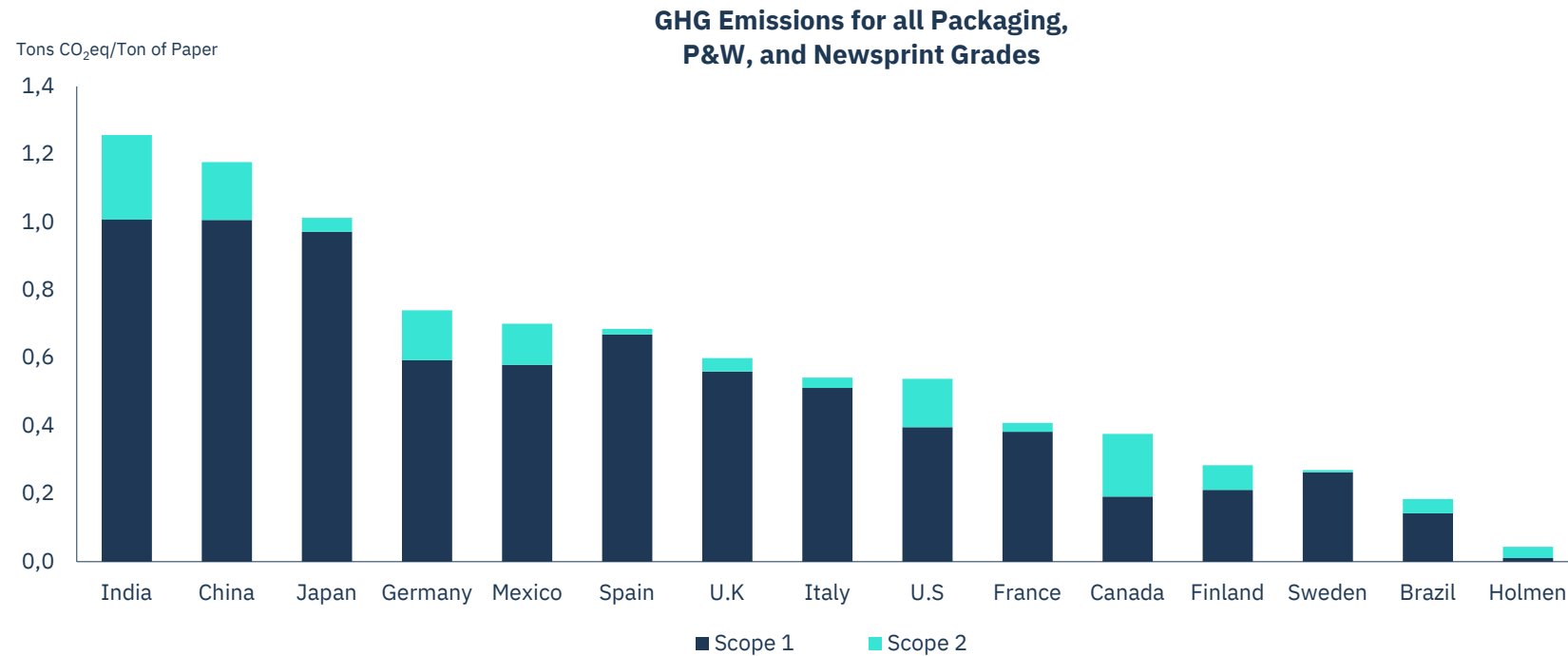
**0.5** Mt CO<sub>2</sub>  
Net storage in buildings



**-0.1** Mt CO<sub>2</sub>e Scope 1+2  
**-0.6** Mt CO<sub>2</sub>e Scope 3

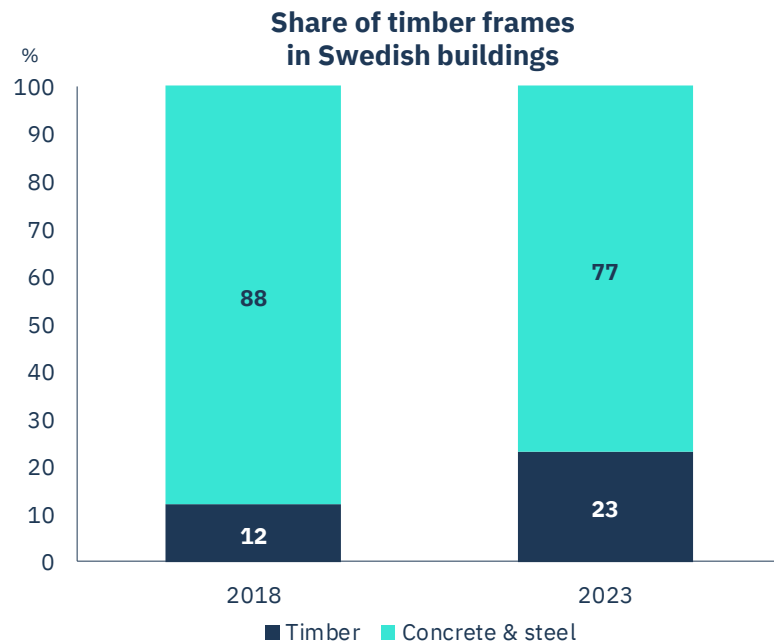
# Helping our customers with their CO2 footprint

## Consumer board, transport packaging, books & magazines

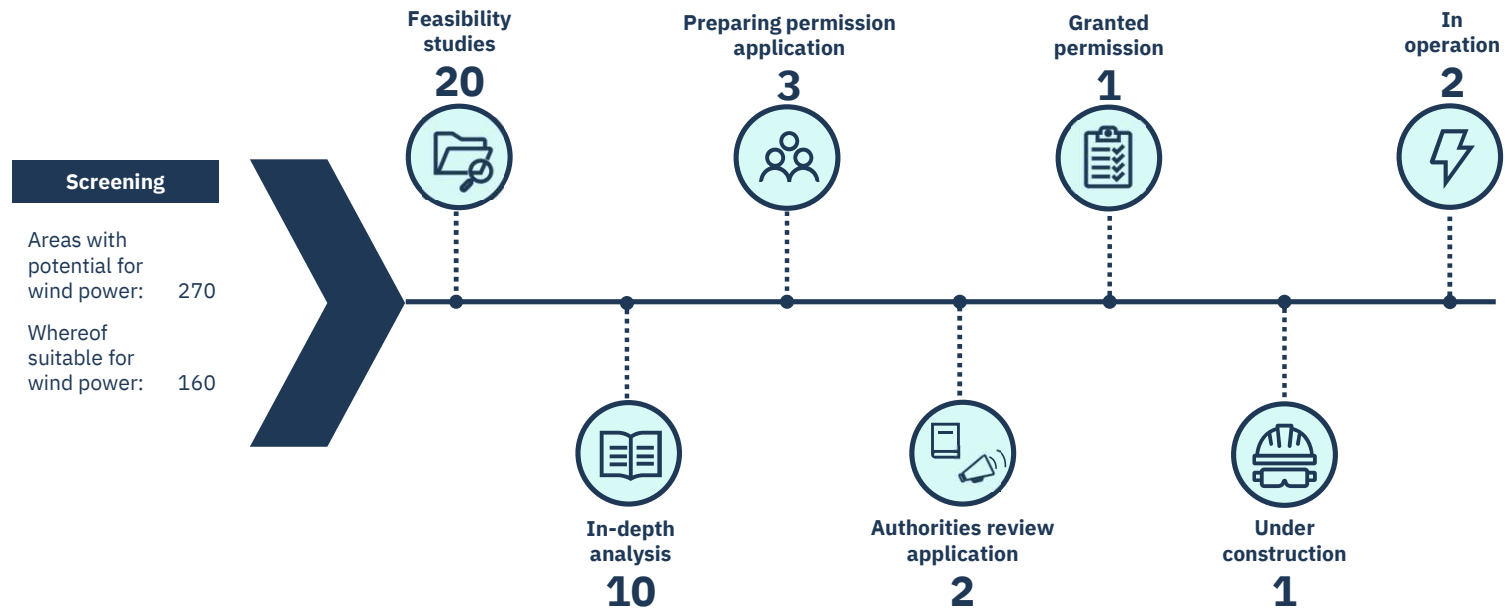


# Offer a green alternative to concrete & steel

## CBAM will push up the cost for building materials



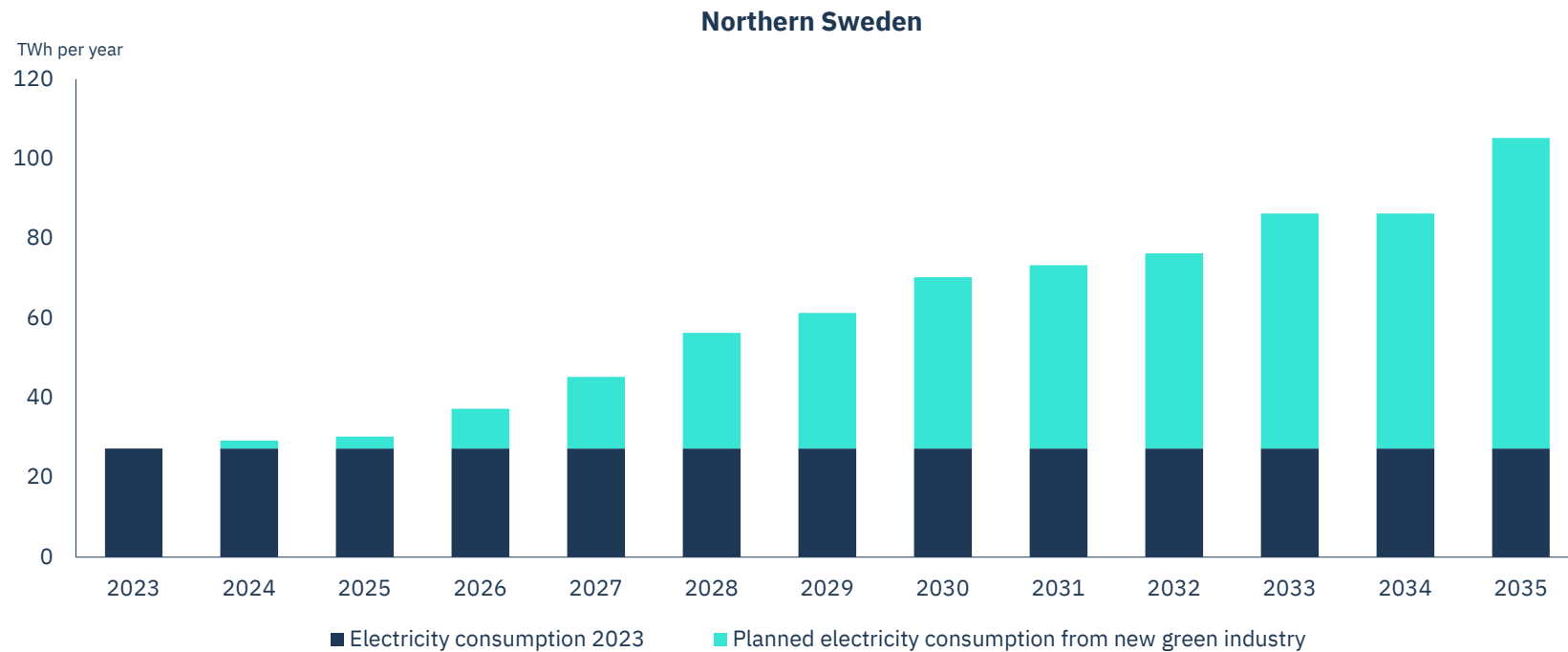
# Developing a wind farm portfolio





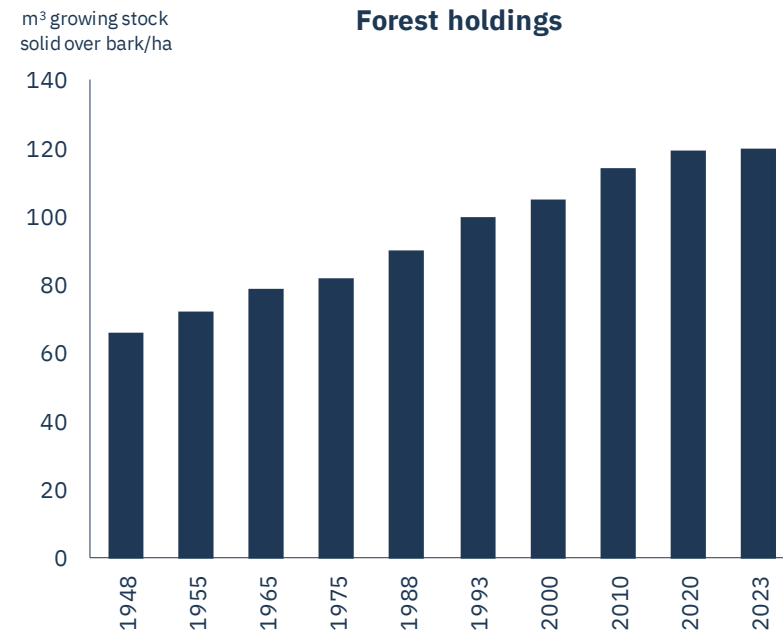
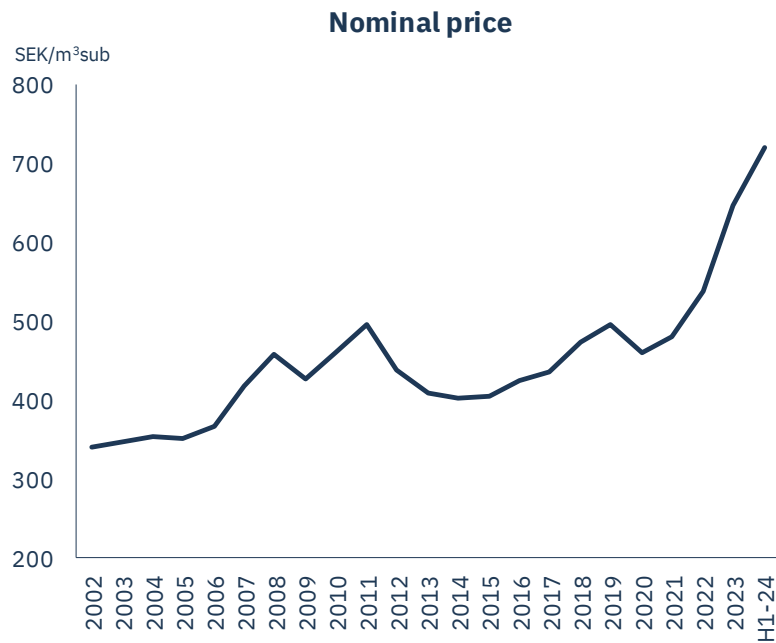
# Supporting the emerging green industry

## Blisterliden will grow our renewable production another 20%



# Forests becoming more of a scarce resource

## Supporting value and industrial operations



# HOLMEN

[holmen.com](https://holmen.com)